

CONTACT US

ANZ SQUARE LOCATED IN
Sheikh Khalifa Theyab Hilal Alnehayan Building
Second Floor, Flat No. 204, Hor Al Anz B
Deira, Dubai - UAE

T : +971 04 2366477

M : +971 58 2894170

M : +971 56 1062698

E : info@anzsquare.ae

E : anzsquare786@gmail.com

W : www.anzsquare.com

ANZ SQUARE
COMPANY
PROFILE

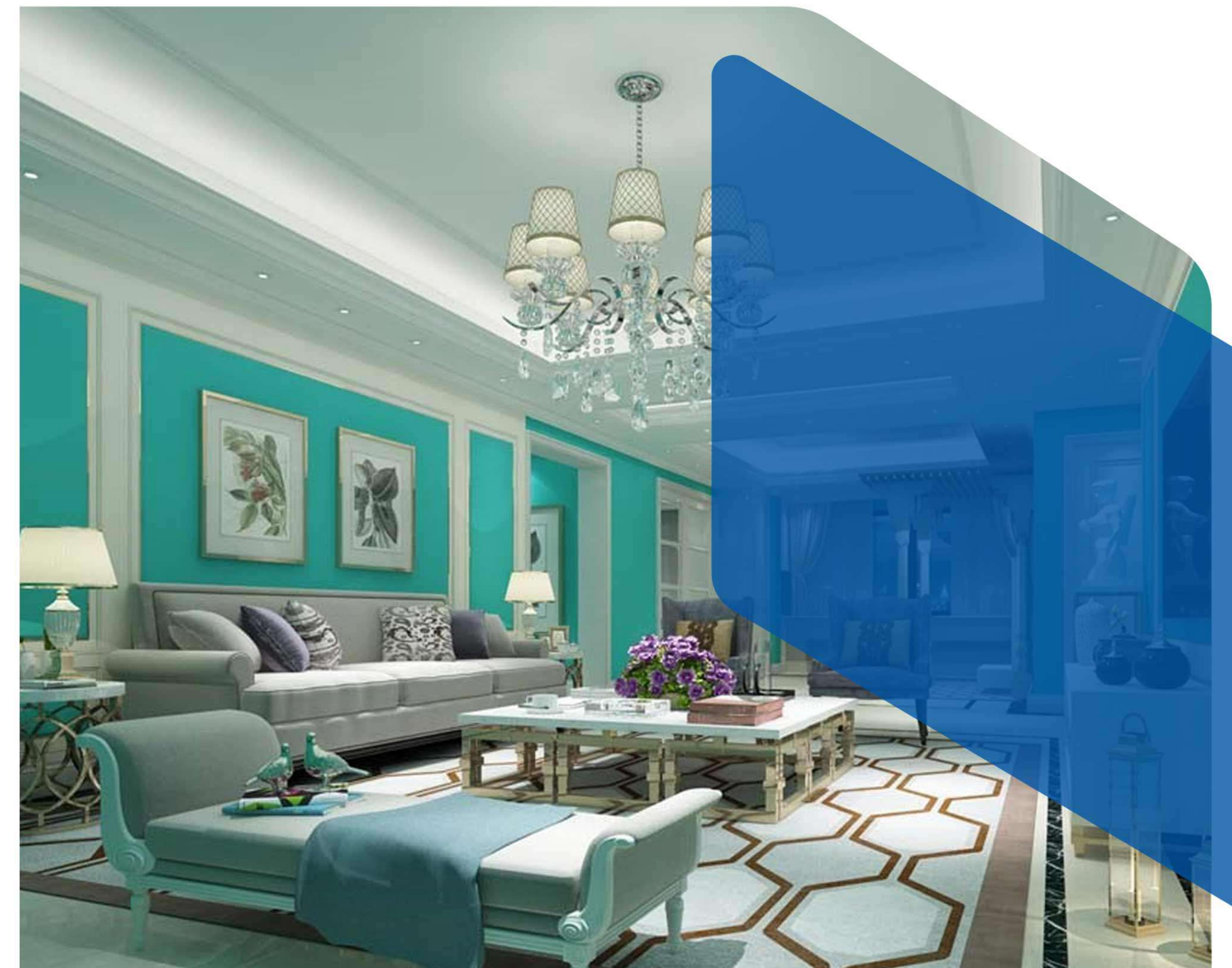


ABOUT US:

A N Z SQUARE BUILDING CONTRACTING LLC is a Civil Contractor in the U.A.E. registered in Dubai. We are specialists in Building Construction (G+1), and our principles revolve around three simple tenets Reliability, Dedication and Competence. A N Z SQUARE BUILDING CONTRACTING LLC started with the activity of building maintenance and construction of (G+1) Private Villas and Warehouses etc.

Our success is based on dedication, devotion and stringent quality control under qualified engineers.

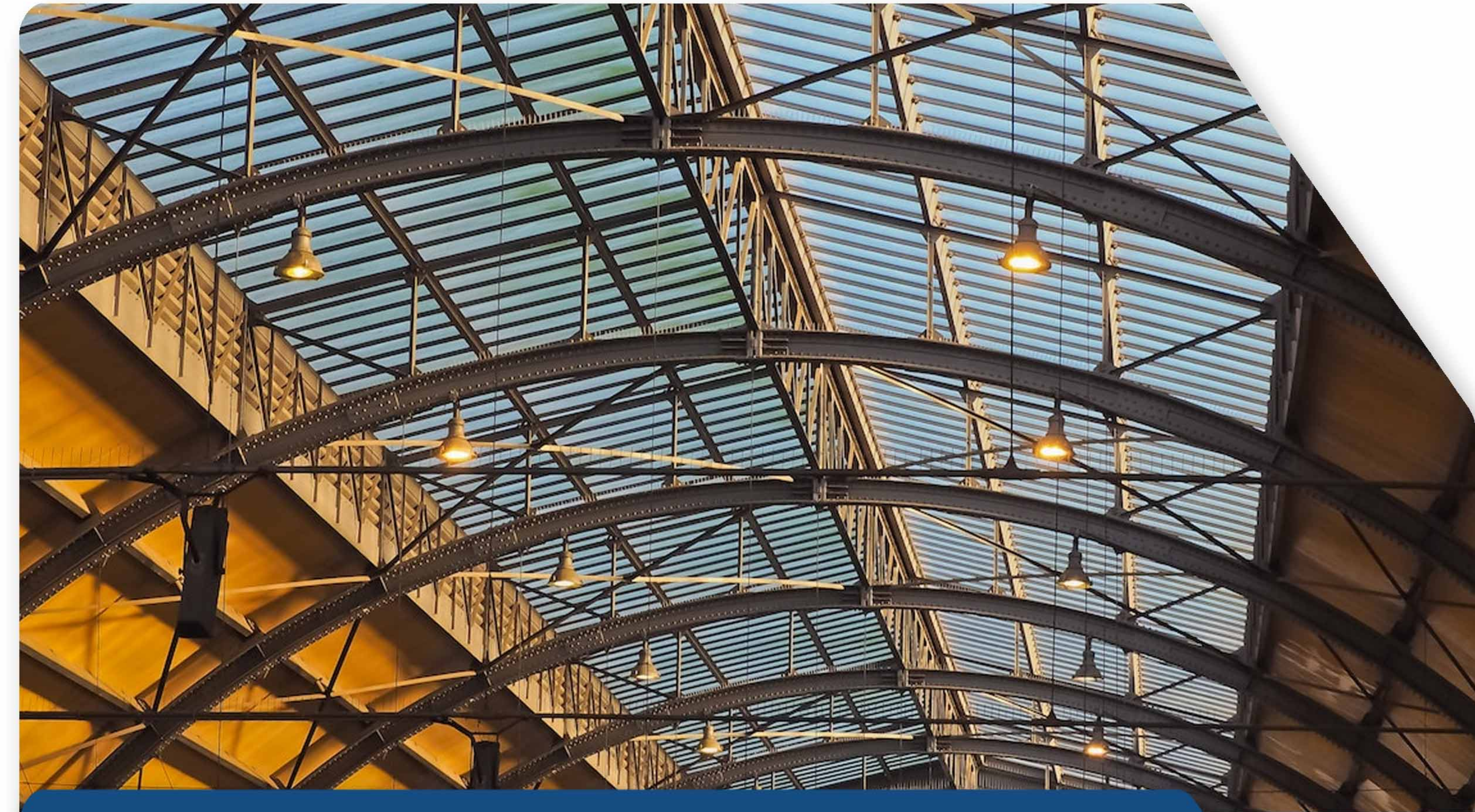
For us "Sky's the Limit" and we strongly believe in synergy. Our professional and committed approach ensure that all our customers are satisfied and the Company is always in the path of progress.



CONSTRUCTION SOLUTIONS:

We are specialist in Building Construction (G+1). A full range of affiliated specialists in the field of construction, keep refining the Engineering Aspects of projects in order to deliver significant technical and commercial advantages.

Our projects included Villas, Residential, Commercial and Industrial Buildings, Refurbishment Works, fit out works etc. We are Approved Contractor for Dubai Municipality, Dubai Development Authority, Trakhees.



STEEL STRUCTURE SOLUTIONS:

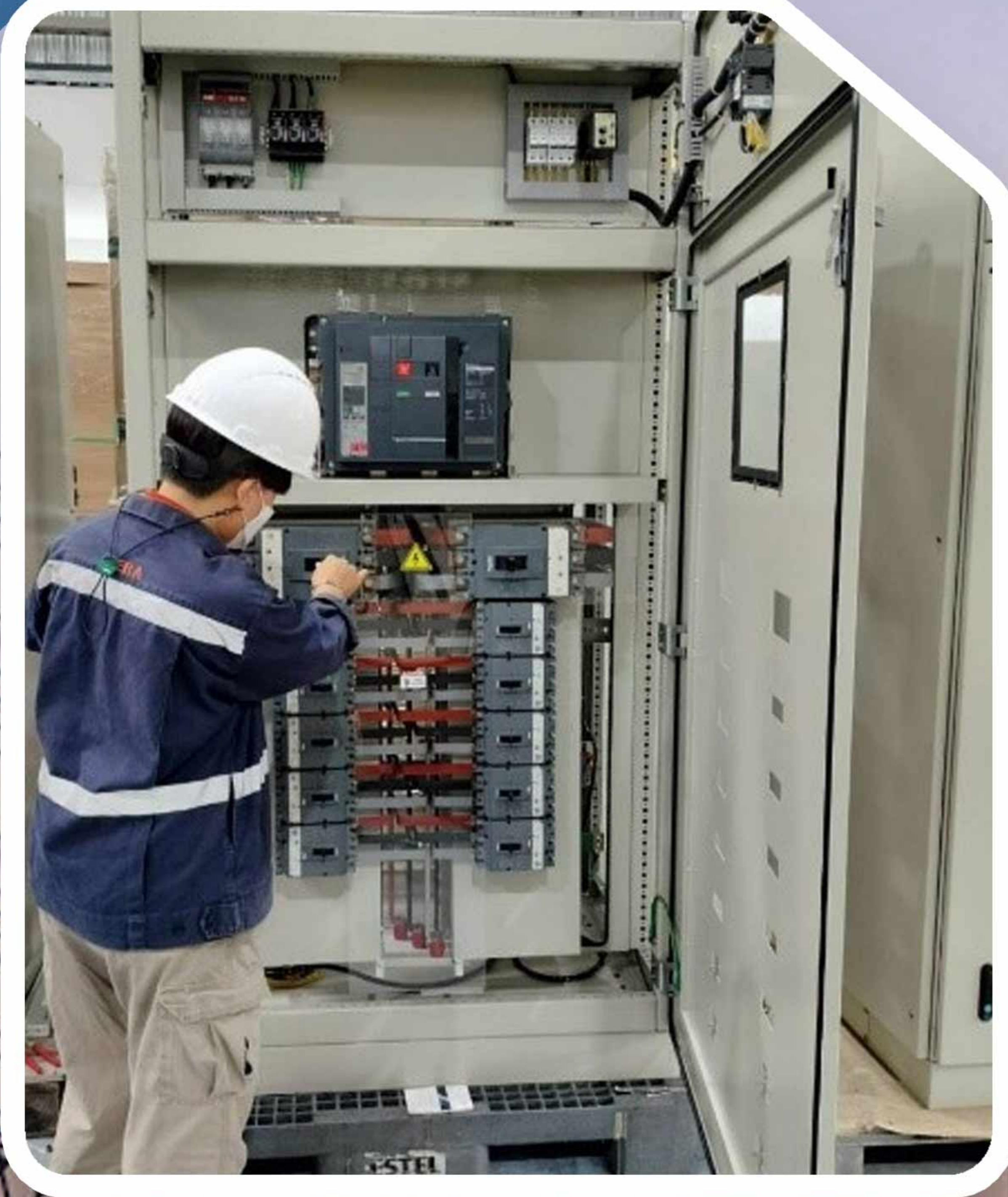
We offer Complete Steel Construction Solution ranging from detailing to on-site erection, along with maintenance. The development of a proposal for a construction project requires a complex series of design decisions involving stakeholders. ANZ SQUARE solutions are tailor made, simplifying the decision process.

FACILITY MANAGEMENT SOLUTIONS:

ANZ SQUARE provides a complete facility management solution incorporating all trades. These services include maintenance of Civil and MEP works. Our FM solution also includes FM budgeting and condition surveys. Due to the range of services and extensive market knowledge,



ANZ SQUARE can meet clients' increasingly complex requirements with competitive practical solutions. Our primary aim is to develop long-term working partnerships with our customers and help them achieve success through a "one team one vision" perspective.

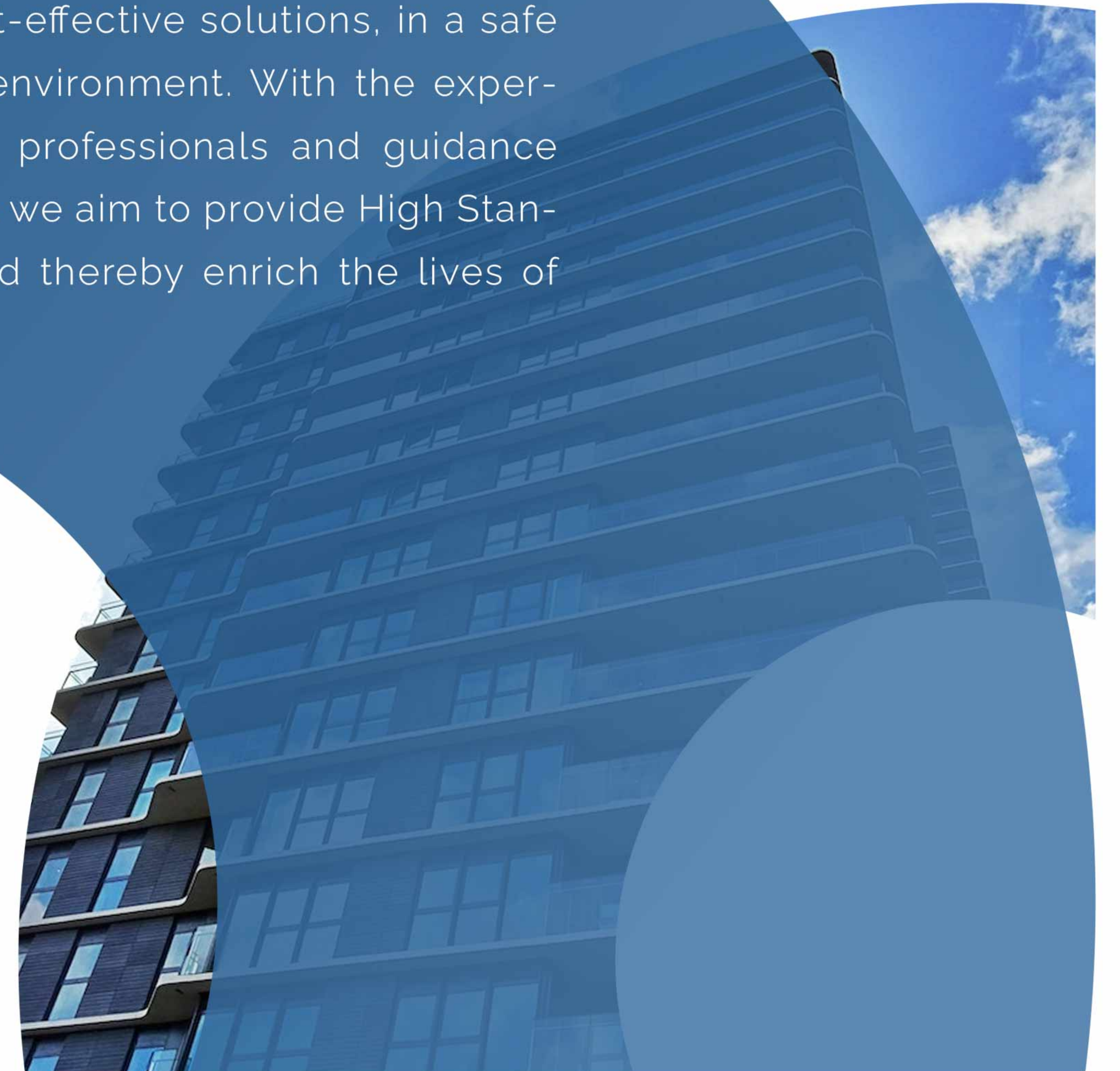


OUR VISION:

To become one of the leading construction partners in the Middle East by delivering quality service to our valued customers and also anticipating new trends and challenges in the MEP services and practices bearing in mind that "Clients Success is the Success of Future World Group".

OUR MISSION:

Our entire team of skillful professionals strives consistently and effectively work towards achieving our client's goal and requirements by rendering quality workmanship and cost-effective solutions, in a safe and healthy working environment. With the expertise of our dedicated professionals and guidance from our management we aim to provide High Standard services only and thereby enrich the lives of our valuable clients.



STRENGTH:

- > Design support teams
- > Dedicated Staff
- > Strong Management
- > Satisfied Customers



ACTIVITIES:

- > Design & Build Projects
- > FM Services
- > Shutdown Projects
- > Maintenance Projects



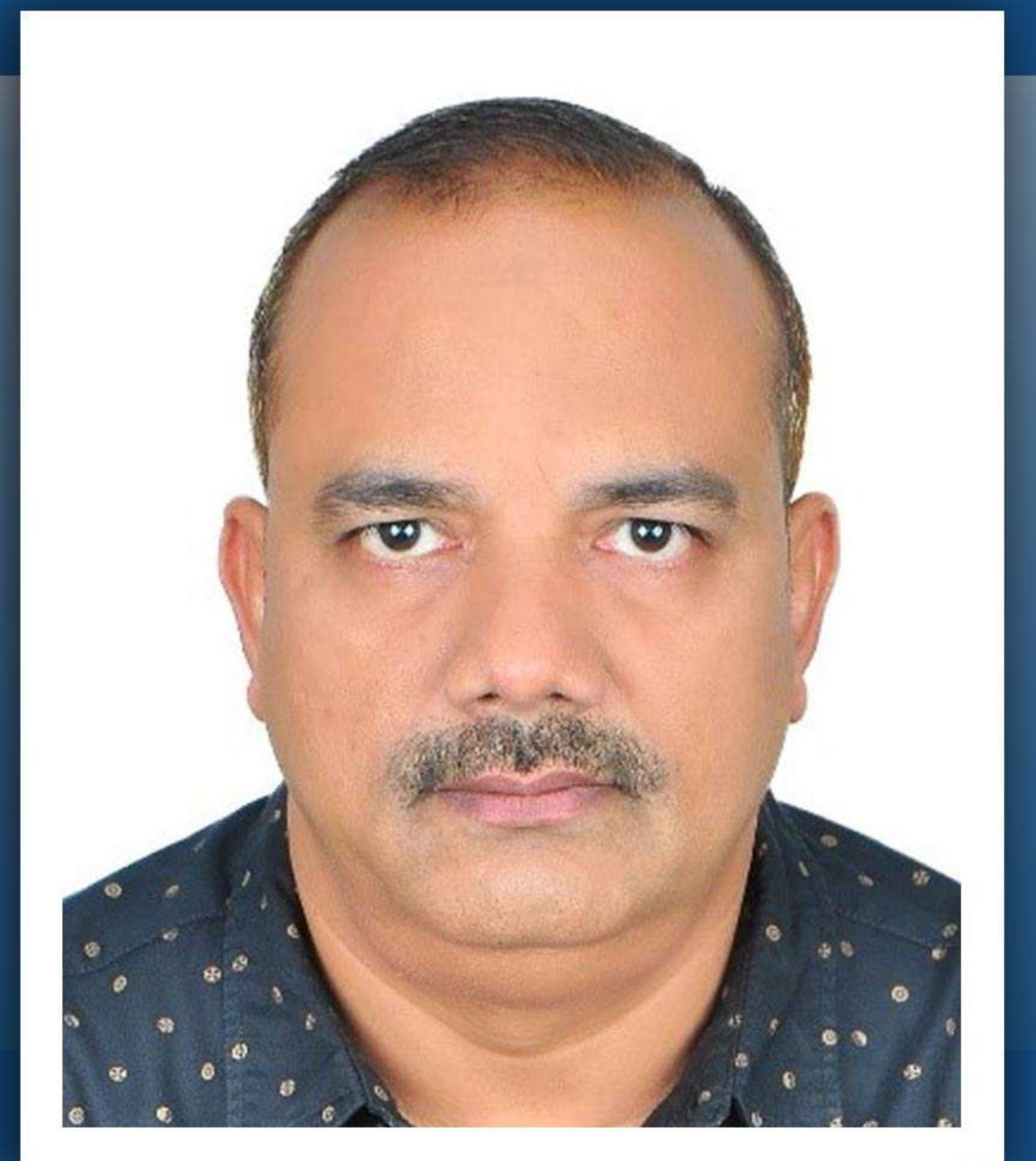
TEAM:

- > Professionals
- > Safety Oriented
- > Quality Driven
- > Time Managed



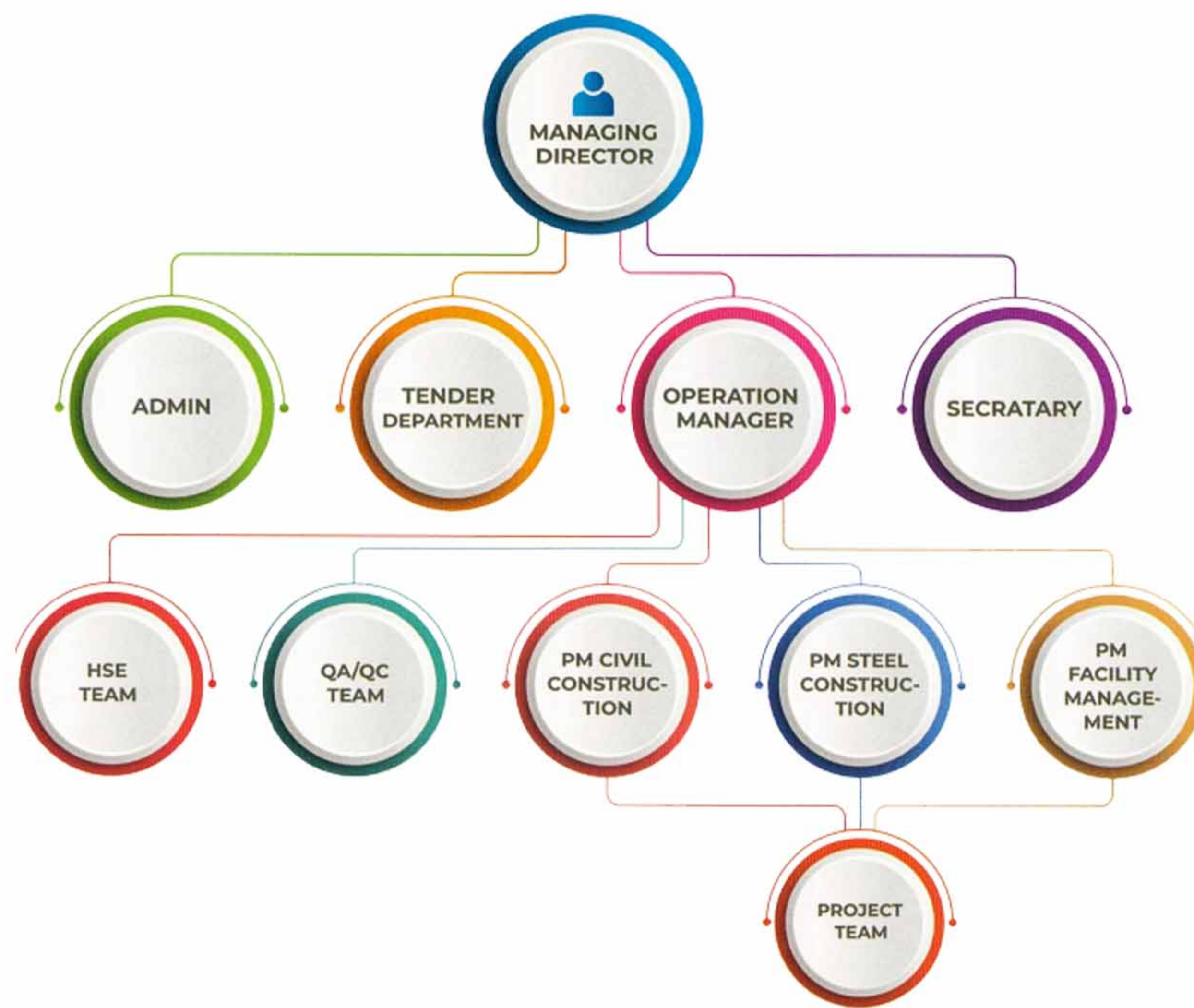
MOHAMMAD ASIF HAIDER

Managing Director



Mohammad Asif Haider is a Civil Engineer with more than 22 years of experience in the field of construction industries in U.A.E. He leads the organization with rightly blending his technical and management skills. He has an in-depth knowledge of markets and changing business environments. He is always aware of the changes happening in technology as well. His extensive experience in the fields of construction and Project Management and his strong Financial Acumen are great assets for the Company strategic planning.

ORGANIZATIONAL CHART:



QUALITY POLICY:

We strive to create a Quality Work Environment in ANZ SQUARE as a prerequisite for providing excellent services to the clients. We endeavor to see that our project deliverables consistently meet and exceed the client expectations. We shall seek every possible way of continuous improvements of work processes by adopting documented methodologies and review of results for each activity

We deem that the time of delivery is the most important quality attribute of the service that we provide. Our success is founded on quality and clarity in communications with the customers and within the organizations.

HEALTH, SAFETY AND ENVIRONMENT :

ANZ SQUARE has an excellent Health, Safety and Environment (HSE) awareness to ensure the well-being of all employees. We are committed to the successful execution of all projects with an accident-free record.

The HSE system is specific to the requirements of each project. SBC identifies all HE aspects including potential hazards for each project.

The HSE plan is then established, implemented and maintained throughout the project's life span, and the plan ensures that all personnel, including subcontractors, are aware of and committed to the system, which includes the arrangements of all resources that are essential to the implementation and control of the HSE system.

The plan carefully analyzes the prevention of on-site accident and considers comprehensive safety requirements for employees and equipment during all the activities such as transportation, demolition, excavation, scaffolding, site layout and storage.

The plan also outlines the required standards of housekeeping and the disposal of waste materials as well.

Each HSE plan instructs and guides all employees to the safety aspects of their occupation. The plan incorporates responsibilities for management, the project manager, site engineers, safety officers, and workers.



COMPLETED PROJECTS:

B+G+M Warehouse for Mr. Talib
Jassim Abdulla Al Hawaii on Plot
No. 599-2186 in Jabal Ali Industrial
Area - 1



Located in Jabal Ali Industrial Area First, Dubai

MAJOR PROJECTS



B+G+M Warehouse for Mr. Talib Jassim Abdulla Al Hawaii on Plot No. 599-2187 in Jabal Ali Industrial Area - 1



G+1 (Twin) Villa in Al Barsha South



Ground Floor Villa in Al Khwaneej



G+1 Villa in Al Mizhar Dubai

CONTACT US

ANZ SQUARE LOCATED IN
Sheikh Khalifa Theyab Hilal Alnehayan Building
Second Floor, Flat No. 204, Hor Al Anz B
Deira, Dubai - UAE

T : +971 04 2366477

M : +971 58 2894170

M : +971 56 1062698

E : info@anzsquare.ae

E : anzsquare786@gmail.com

W : www.anzsquare.com